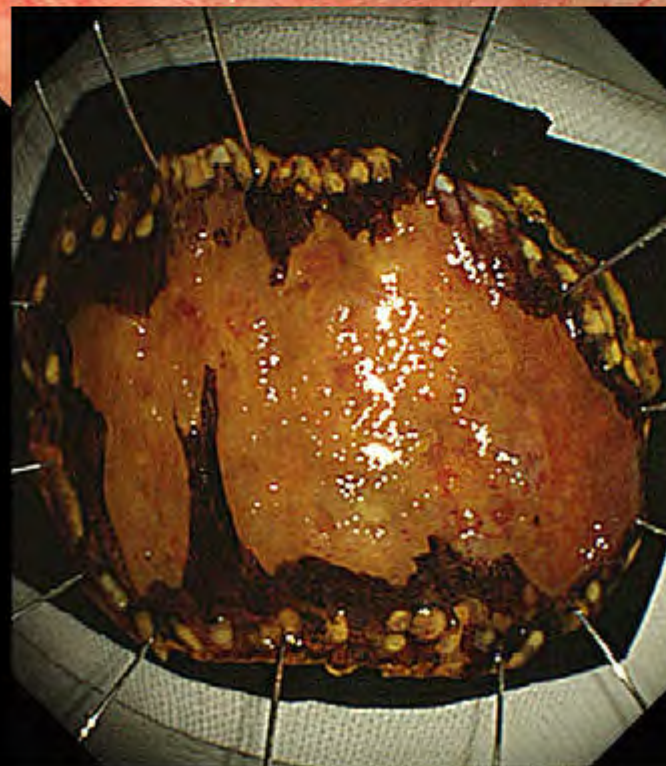
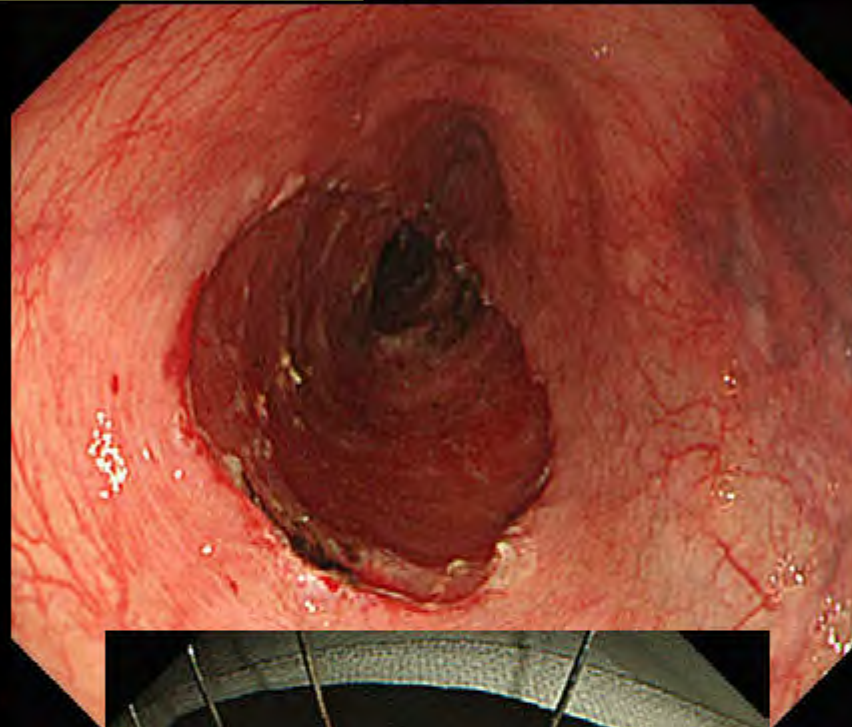
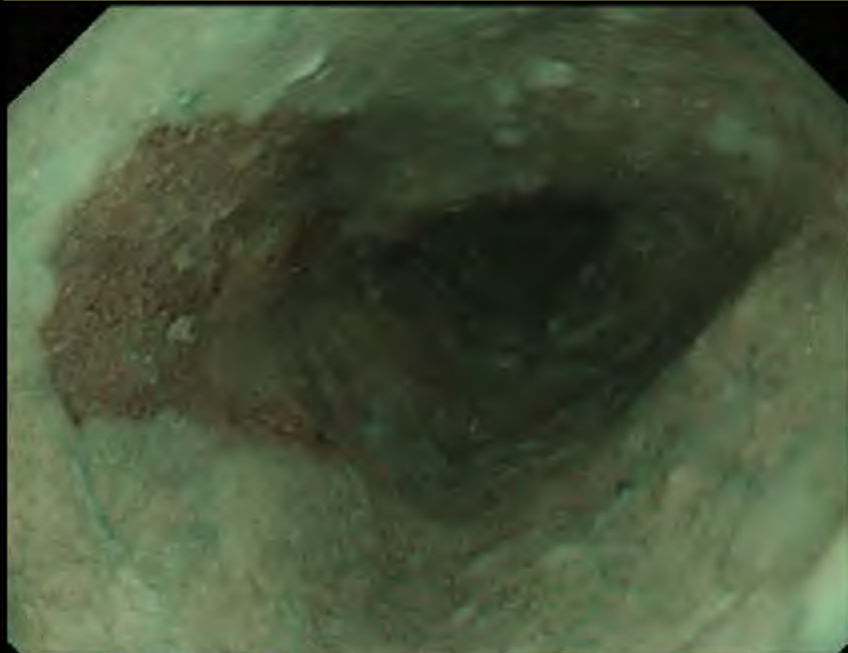


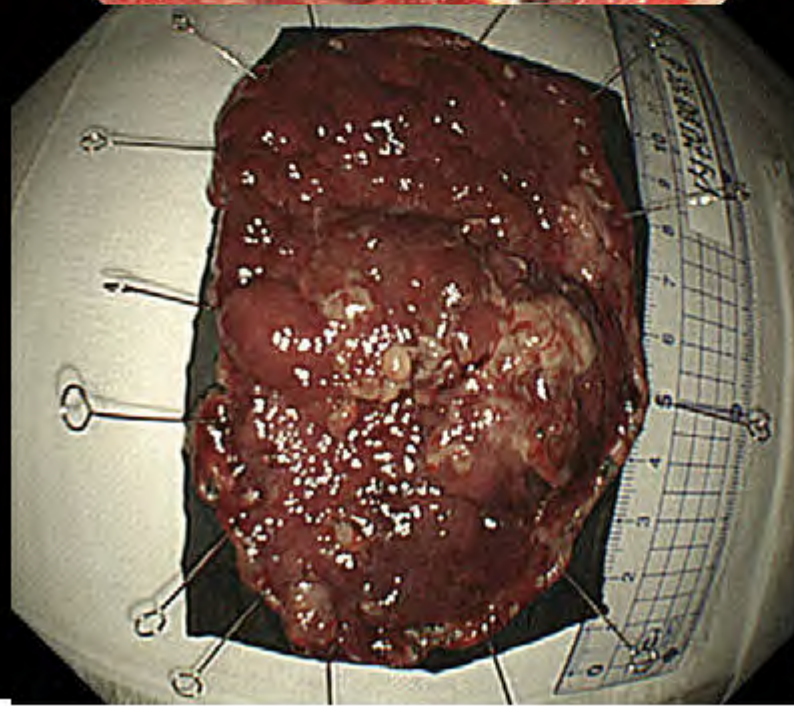
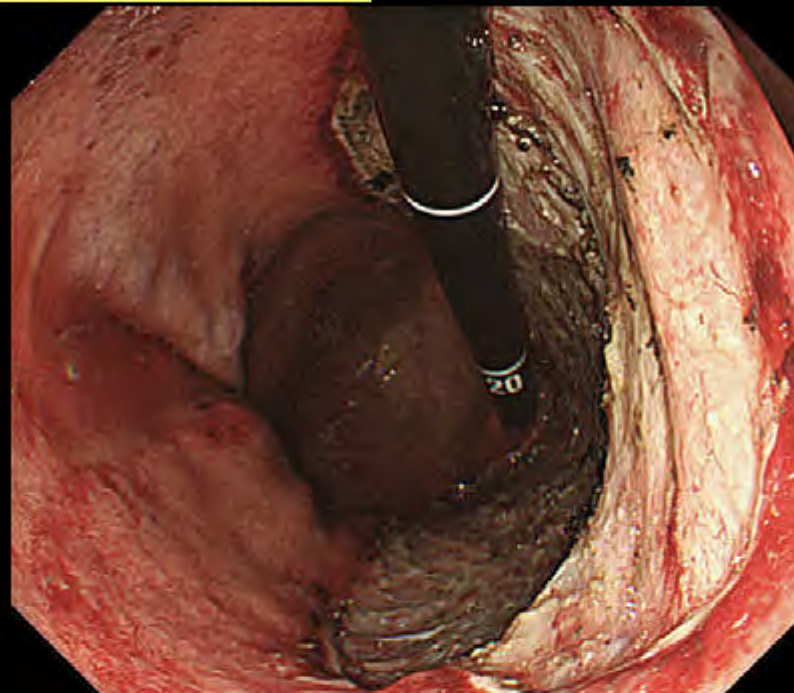


当院における内視鏡治療・特殊検査の ご紹介

食道癌 → ESD(内視鏡的粘膜下層剝離術)



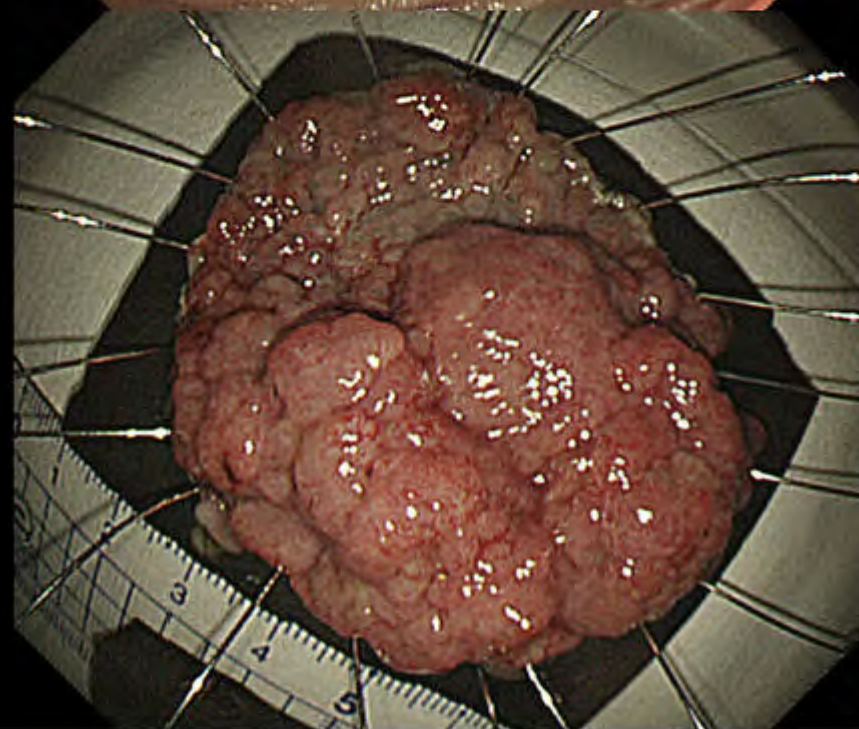
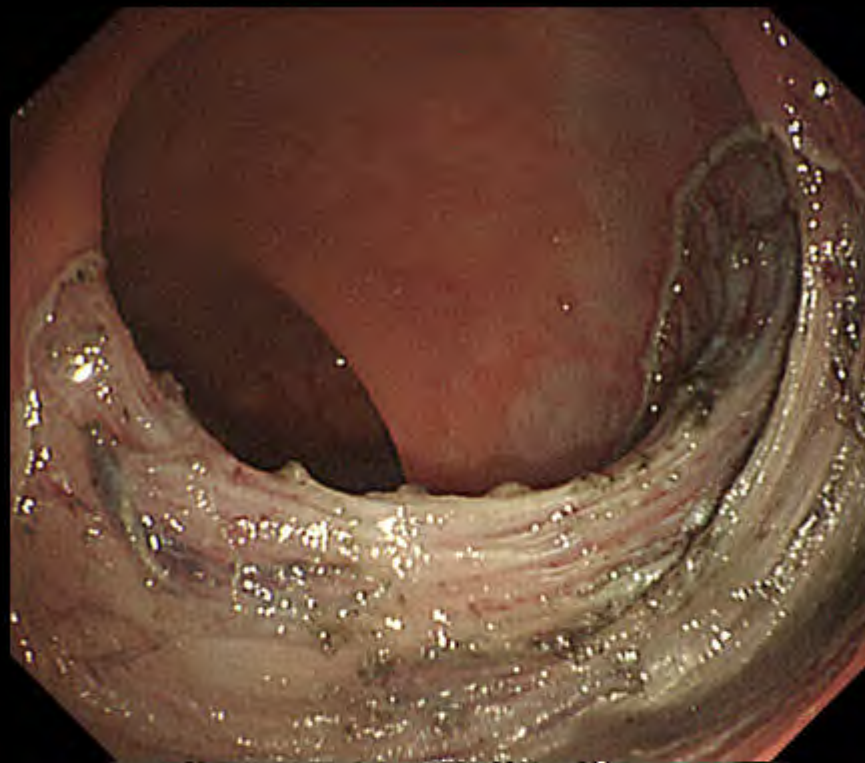
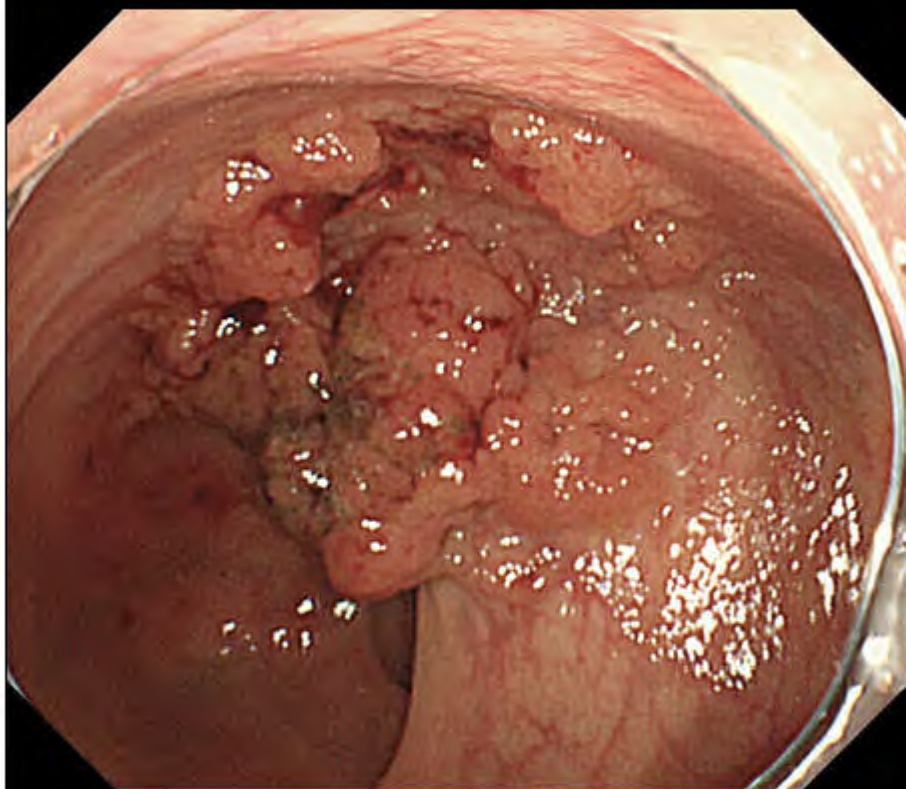
胃癌 → ESD(内視鏡的粘膜下層剝離術)



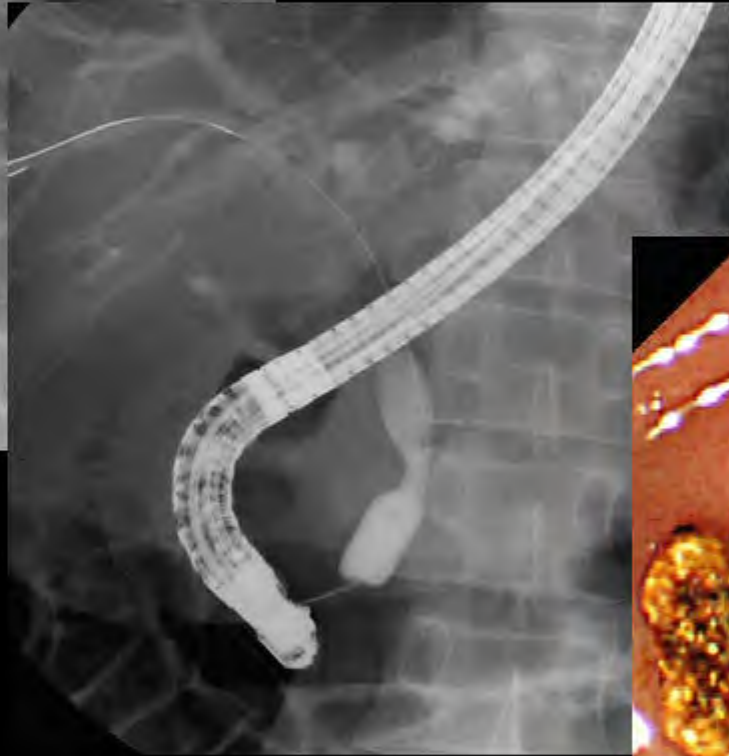
十二指腸腺腫 → EMR(內視鏡的粘膜切除術)



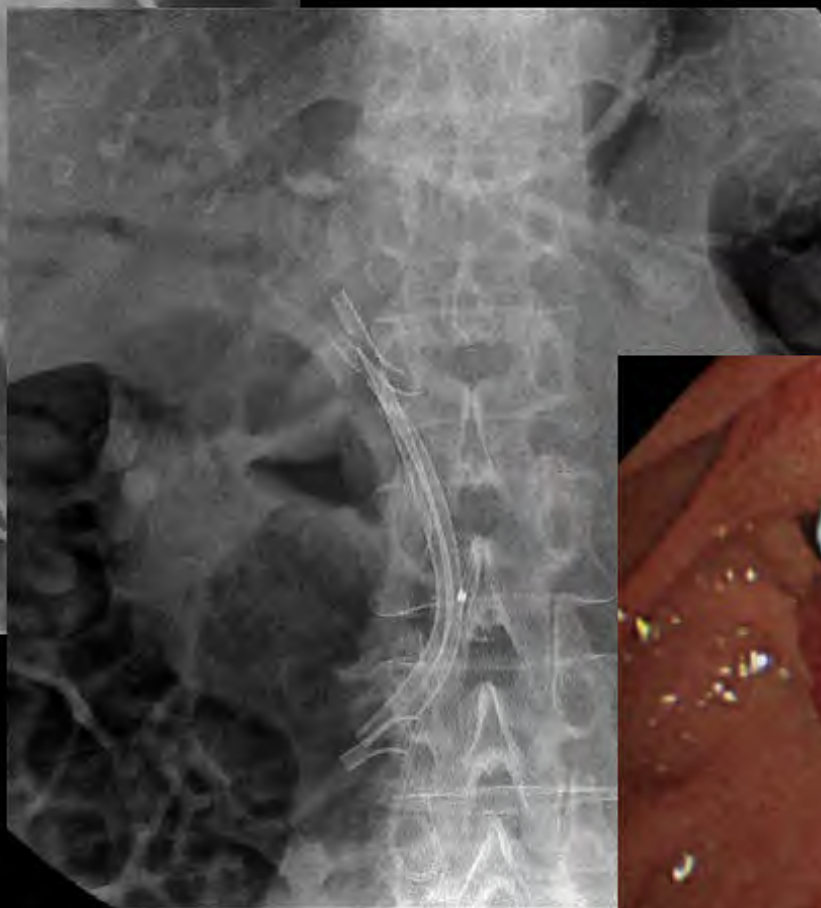
大腸癌 → ESD



胆管結石 → EPLBD(内視鏡的乳頭ラージバルーン拡張術)

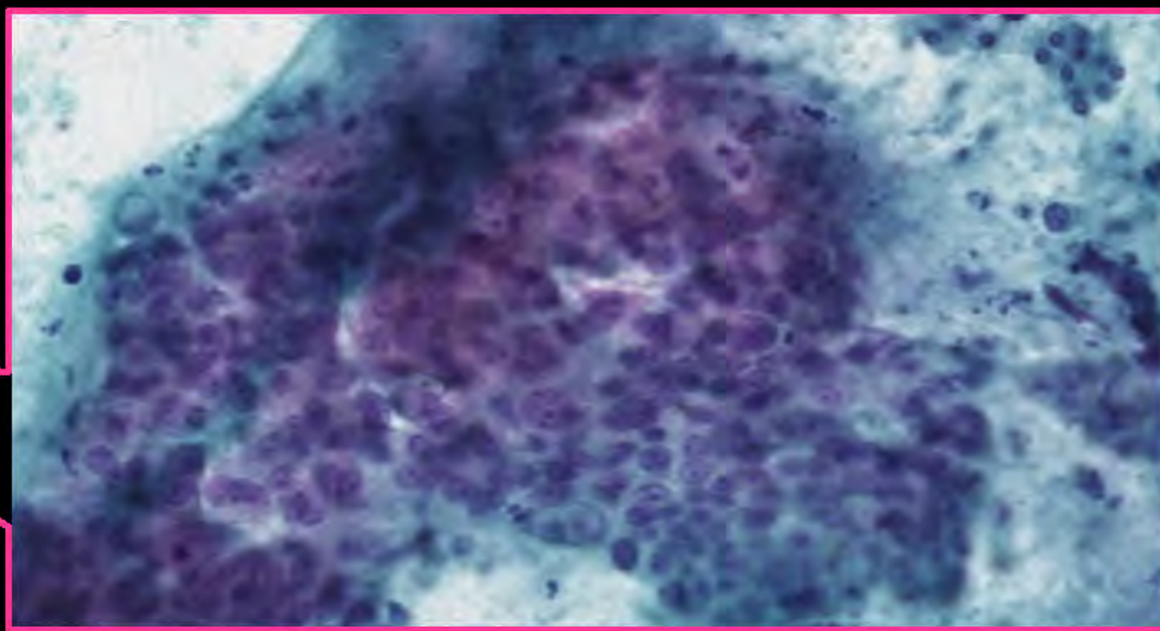
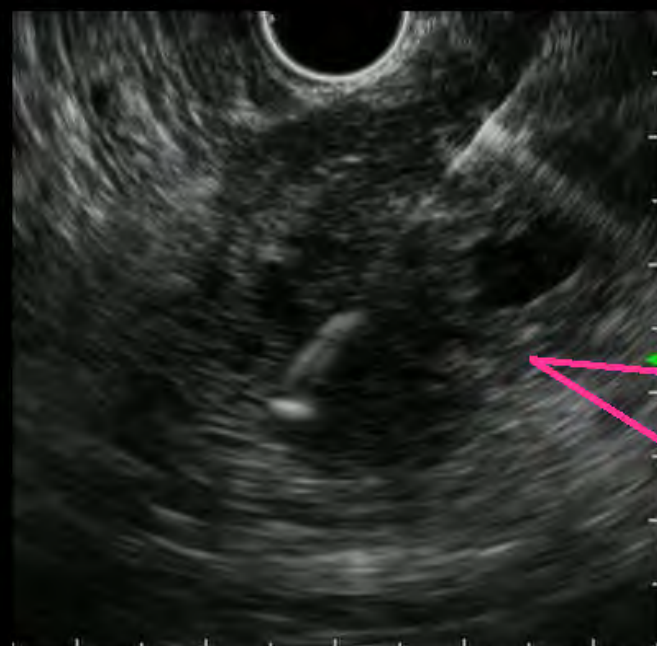


慢性膵炎に伴う胆管狭窄 → 膵管・胆管ステント



膵癌 → EUS-FNA

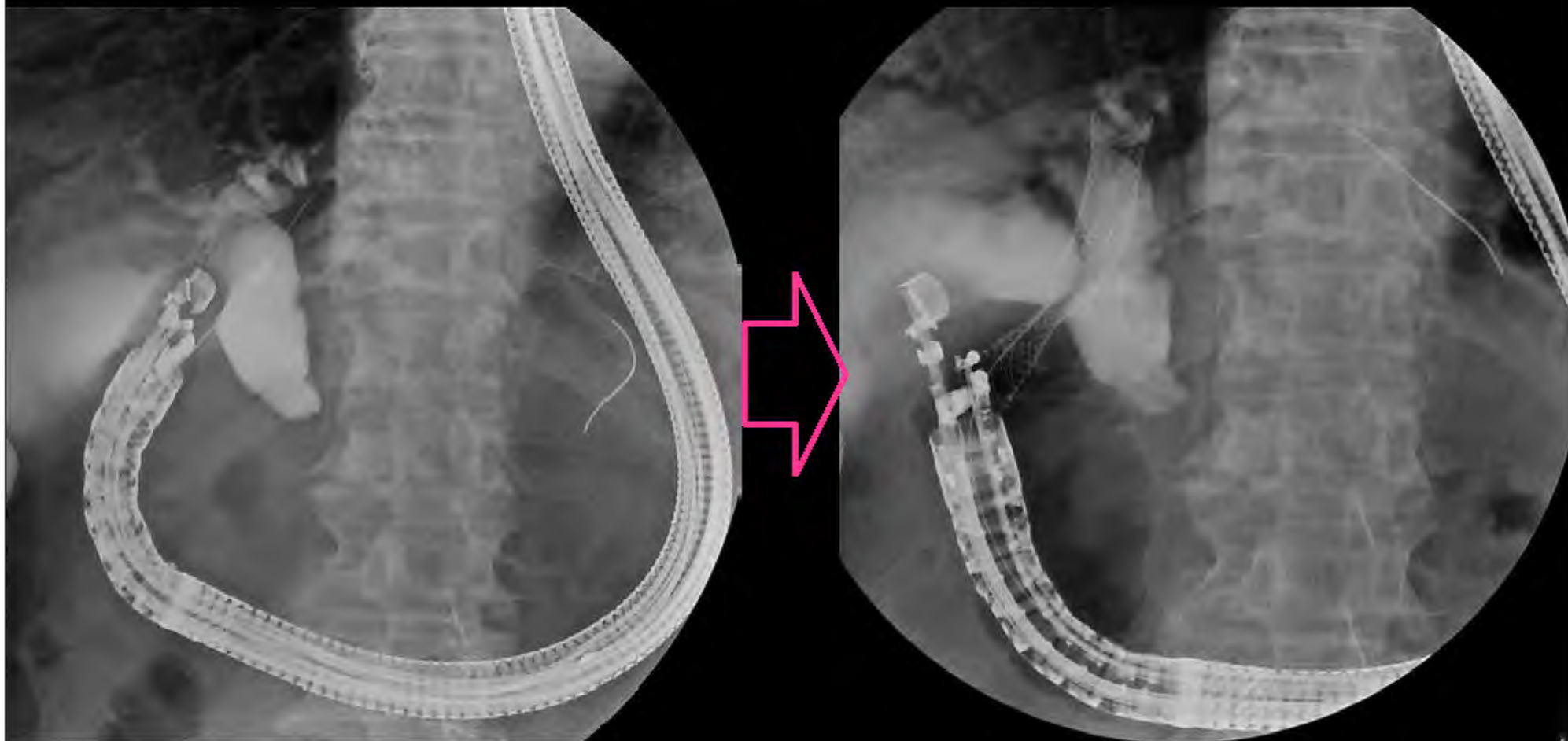
正診率：92%



膵癌＋閉塞性黄疸 → ERCP下胆道ドレナージ



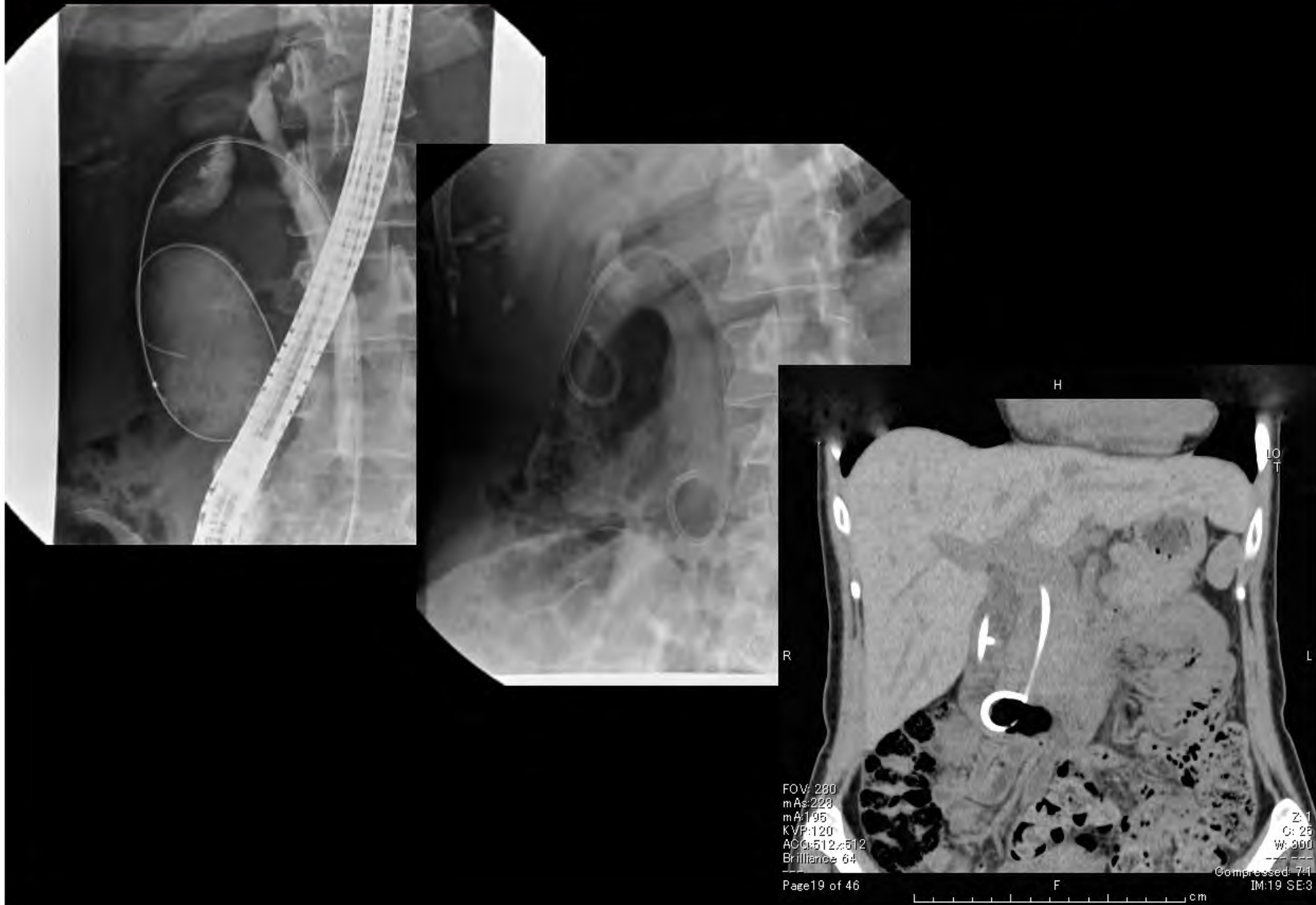
膵癌 + 閉塞性黄疸 → 超音波内視鏡下胆道ドレナージ



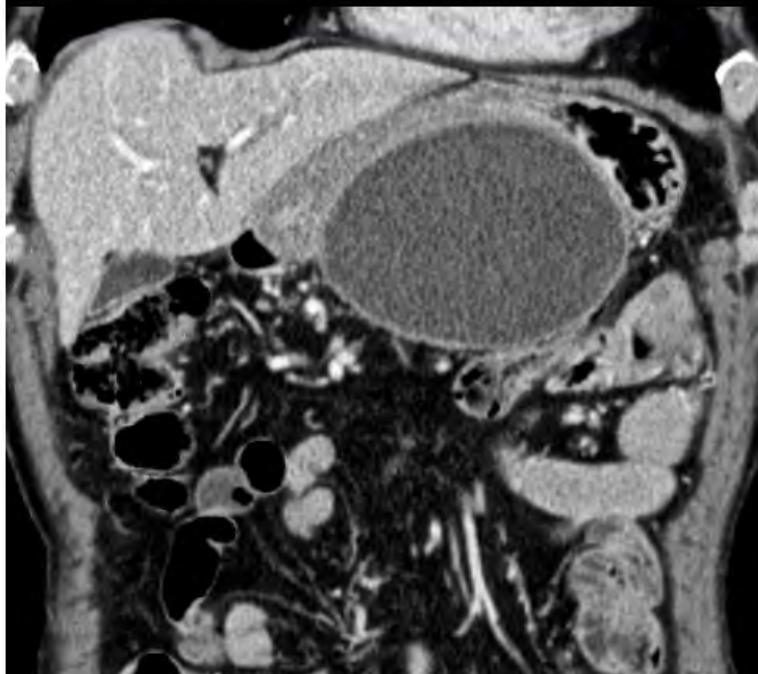
肝門部胆管癌 → multiple stenting



胆嚢炎 → 内視鏡的経乳頭の胆嚢ドレナージ

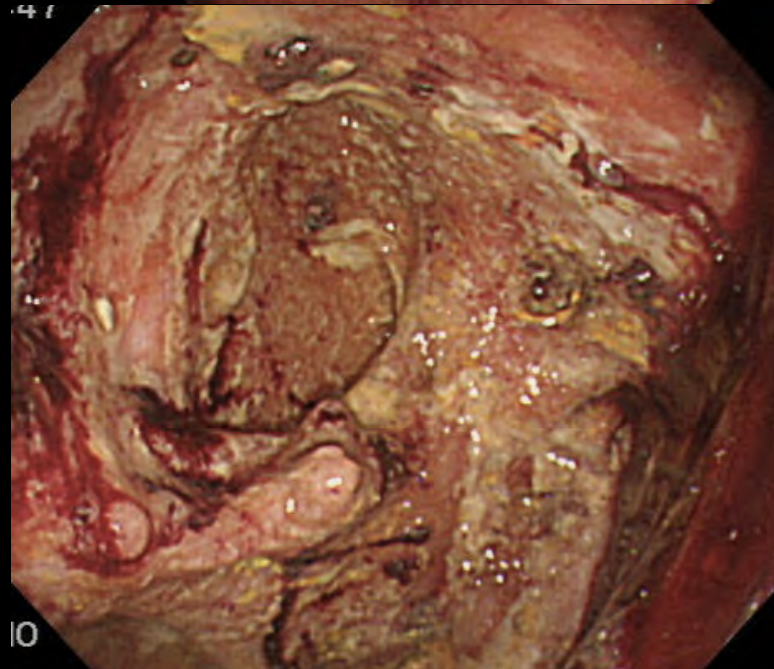
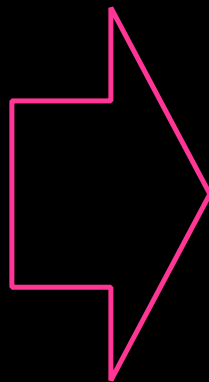
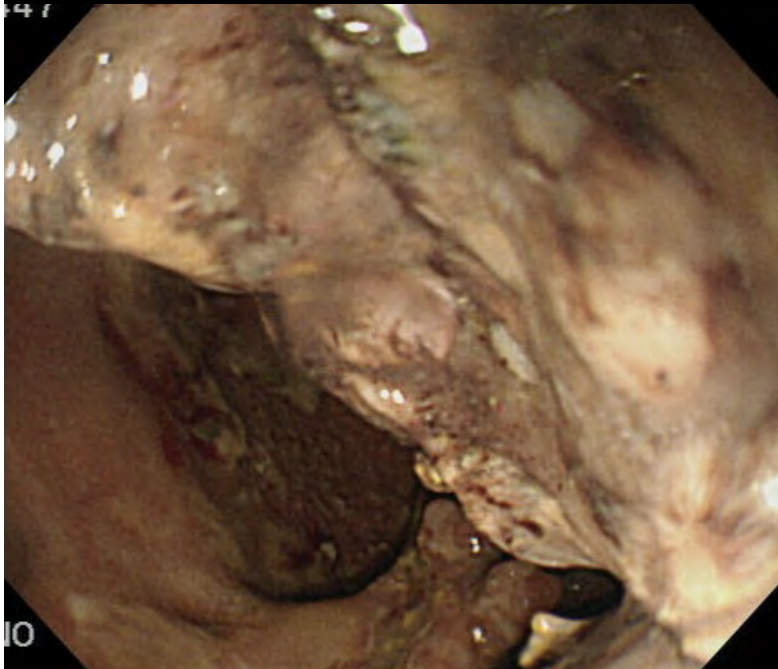
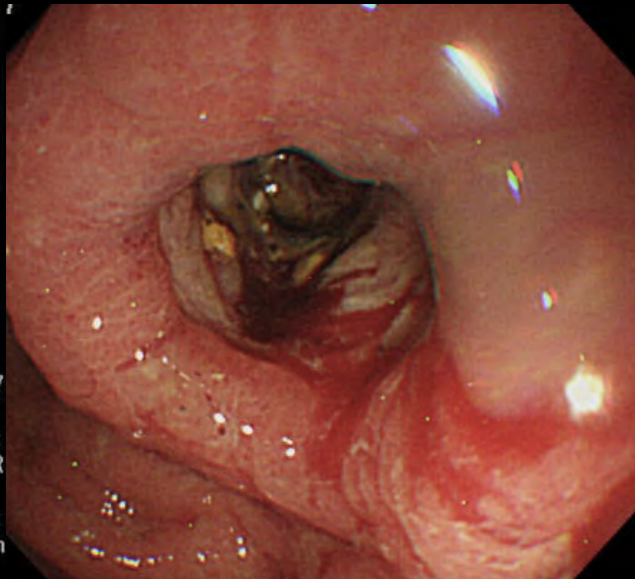
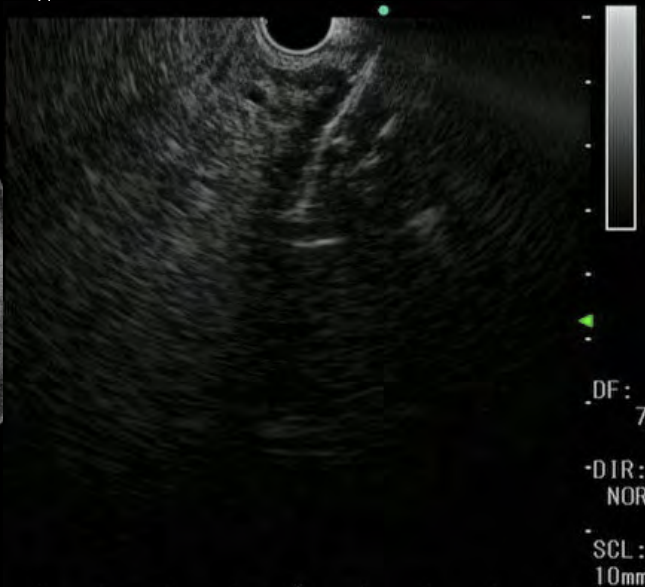
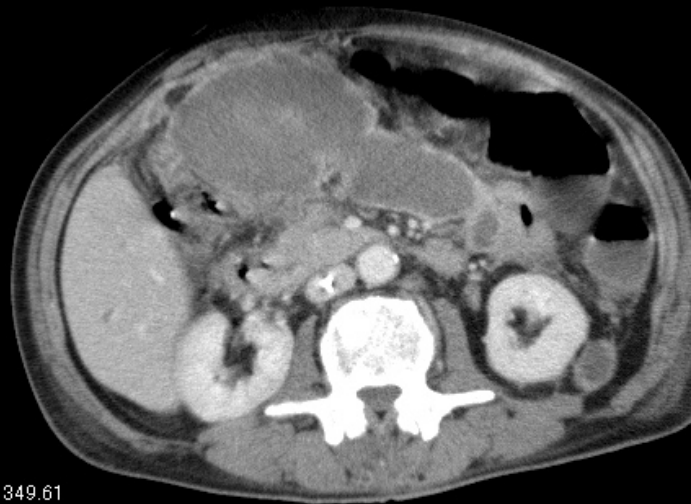


脾仮性嚢胞 → 超音波内視鏡下脾嚢胞ドレナージ



Walled-off pancreatic necrosis

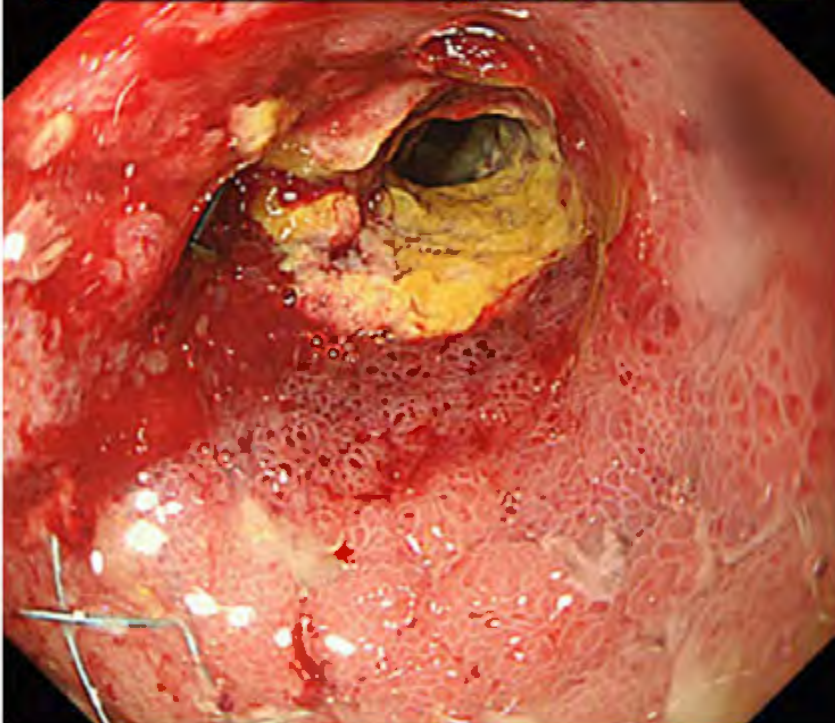
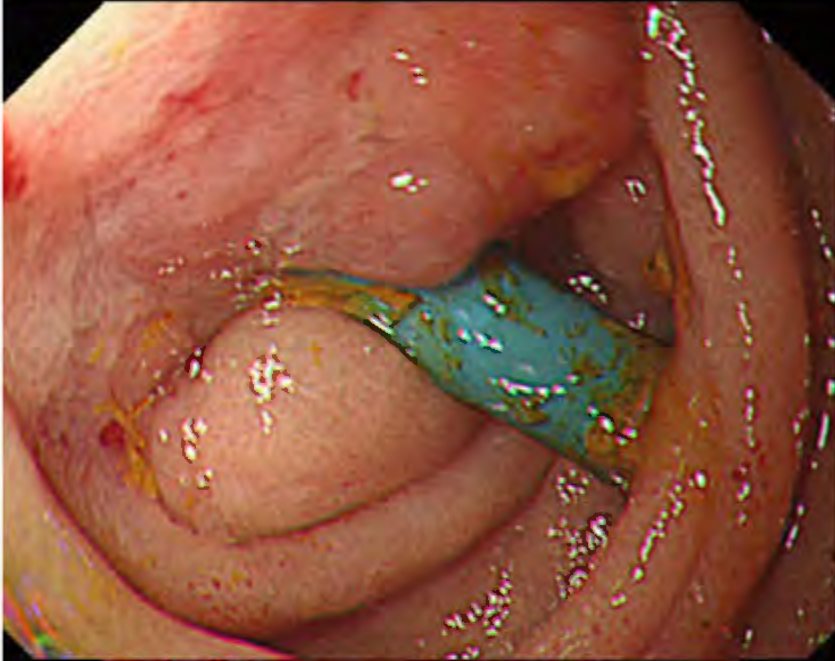
→ Endoscopic necrosectomy



膵体尾部切除術後膵液瘻 → 超音波内視鏡下瘻孔形成術



十二指腸乳頭部癌 → double stenting(胆管ステント+十二指腸ステント)



大腸癌イレウス → 大腸ステント

